

# THE LW MAGAZINE

## Multi-site 2014

Living Water looks to expand  
the vision beyond...

## Food Co-op

Re-thinking how we serve

Vision &  
Budget

2013

## Our God Story: Daughter & Mother

The major steps that led me to our Savior are sad but happy memories. God used a special woman named Crystal Carpenter to bring me closer to Him. I met Crystal because I started dating her son, Jonathan. When we started dating, Crystal had already been diagnosed with cancer. At the time, I really wasn't a follower of our Lord. When I got to know her, I remember asking God, "how could you do this to someone like her?" She never gave up and even though she knew what was to come, she still had faith even until the last moments. It was at that time I found myself wanting what she had. I wasn't even exactly sure what "it" was. She showed me by her example what it is to be secure in God's loving embrace. After Crystal passed away, I was drawn to LW every week with Mark (Crystal's husband) and Johnny. When the first mention of baptism came along, I was instantly interested. I knew this is what God wanted and that Crystal would be proud. Taking the step to get baptized was huge for me. I know coming to a new church can be nerve racking or stressful, I however never felt this coming here. I was so excited about taking these steps that I brought my mom [Krista] with me. Having her come only let my faith grow even more. The strength Crystal showed brought me to Christ. I know that no matter what happens, I am never alone, and that give me the courage to work through things I normally would have ran away from. I would like to encourage anyone who has been thinking about coming closer to God to take that step. He has changed my life for the better. I will never forget when I took my step to becoming a part of His Kingdom.

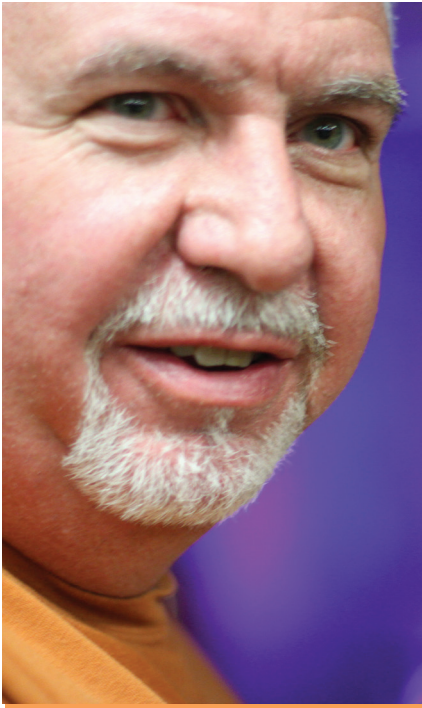
- Morgan Waddell

As Crystal's health declined, I noticed their family was getting stronger in their faith. It made me start to examine myself and my faith. When Morgan decided to be baptized & re-dedicate her life to Christ, it made me look at myself again. I felt that I needed to get a stronger relationship with God. My faith was not where it needed to be and Morgan helped me to realize that, so I decided to get baptized as well. Since that day, I feel excited about life and following Jesus. I get excited about what He is doing through my life and have faith everyday that He is with me.

- Krista Waddell



[Photo of Krista W. & Dan H.]



## LW VISION:

Real people, living relevant lives, relentlessly pursuing New Life.

## LW CORE VALUES:

**Believe in Truth:** Scripture (the written Word) and the Holy Spirit (the spoken Word) live in us when we honor both as the source of all Truth.

**Walk with God:** Relationship with the Father happens as we respond to His invitation.

**Move forward by faith:** Obedience and faith in action transforms us as we look to Jesus Christ as our model.

**Live in Connection at LW:** New Life happens as we engage in meaningful, encouraging relationships.

**Impact our neighborhood & world:** New Life becomes contagious when we love people as God loves people.

**Extend grace:** Unity thrives when we live unoffendable lives and deeply value everyone, both in the church and in the greater community.

**Enjoy Life:** Joy is contagious as we have fun together.



# CONTENT

- 06 LW Multi-site
- 09 Mentoring
- 10 Food Co-op
- 12 2013 Overview
- 13 Worship
- 14 Age Level
- 16 Care
- 17 Operations
- 18 Communications
- 19 Leadership
- 20 Facility
- 21 FMC
- 22 LW Outreach
- 23 Debt Elimination
- 26 Connection Pointe
- 27 Finance Office

Contact Info:  
livingwaterfmc.org  
info@livingwaterfmc.org  
330.828.8356

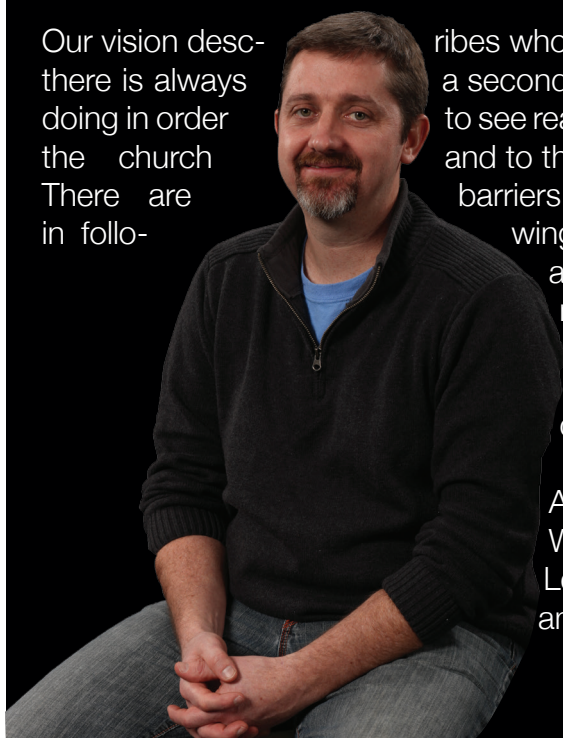
**SINCE THE DAY LW BEGAN**, we have been breaking the barriers. Our vision has been about being something different, something more, and something that truly honors God. With each passing decade, we have given our vision some different words, but the picture of truly becoming the church Christ intends for us to become remains deeply at the heart of who we are.

Our current vision speaks clearly about who we are. We are real people, living relevant lives, relentlessly pursuing New Life. Each of these elements of our vision requires us to break barriers in order to accomplish what Jesus has called us to be (see Matt 28:18-20, Matt 22:34-40). Somehow the world around us is trying to force us into becoming plastic people hiding our true identity out of fear or inadequacy. We must break the barrier of carrying a facade! I often wonder why it is so many people see Christians as irrelevant when we have the most important message in the history of the world.

## Making the call to “Break the Barriers” by Mark Hirst

We must break the barrier of living out of touch with those who desperately need the grace of Christ! We find ourselves in a great battle for our own lives as well as the lives of our family, friends, neighbors and those we are yet to meet. It is easy to take the road that leads to complacency and give up on the fight. DON'T! Break the barrier and choose to be relentless in pursuing New Life for yourself and for others!

Our vision describes who we are becoming, but there is always a second question. What are we doing in order to see real transformation brought to the church and to the greater community? There are barriers we are breaking in our lives in following Jesus, but what barriers are we breaking as a community of believers? It is clear that in 2013 God is calling us to expand the Kingdom in very specific ways.



As the pastor of Living Water and along with the Leadership Team and staff, I am calling you to four things!

### 1) Choose to multiply your life in someone else.

Intentionally invest yourself in someone who needs a mentor in their life. All of us know enough and have the experience needed in order to help someone else on their journey. I have seen a 4th grader coach and encourage a 1st grader, so I am pretty sure this removes even our best excuses. While we will be beginning an official mentoring program this year, (see page 9 ) there is no question you can mentor by simply choosing to regularly share who you are and what God is doing in your life with someone who needs encouragement.

### 2) Choose to expand or multiply your small group.

Every church and group within the church must ultimately exist for those who are not yet part of it or it will begin to die the moment it meets. There are many people who need invited in. It can happen in a million different ways, but we need to make room for those who have not yet found their place. While changing the make-up of your group by adding someone new or multiplying to become two groups can be a struggle, it is much needed to keep us fresh and alive (see page 15).

### 3) Choose to make the ministry you are part of more effective.

Every ministry must constantly look for ways to more effectively accomplish the goal of making disciples. This requires passion, prayer, and a plan. I love the example you will find on page 10 & 11, which envisions the transition our current food pantry to a food co-op in 2013. Great things have happened through the pantry. Even greater things will come through the co-op. What about the ministry you are a part of?

### 4) Choose to be an active part of multiplying our church by transitioning LW into a multi-site church.

We have an unbelievable church with amazing people. We can't just keep this for ourselves when so many are in need of what we have. We will continue to invite people and offer the New Life Christ has to offer right here, but it is now clear it is time to take what we have to them. LW is in the planning stages of launching a multi-site campus in another community who greatly needs a healthy and vibrant church. Read "Going Multi-site" on page 6.

All of these things will take great amounts of energy, passion, effort and resources. If it were dependent solely on us, this would make me ti-

red, uncertain and dismayed. Great news... This does not rely on our power and abilities, just the courage to step forward, sacrifice and open the door for God to work something amazing. We are breaking the barriers in the name and power of Jesus Christ this year at LW.

## OWNERSHIP 2013:

At LW, we believe the church should be a movement that continues to advance the Kingdom of Jesus Christ here on earth. We are challenging everyone who calls this body of believers "their church" to take ownership at LW. Ownership is a one year commitment to the vision and purpose of the church. Owners are people who will say, "Yes, I will be someone who gives, serves, and leads the way in pointing people to Jesus Christ and shaping the church into everything He has called us to be." On Sunday mornings in February, you will have the opportunity to see what ownership entails and make the commitment. Ownership symbolizes our commitment to unity. In essence, we are saying we believe we can accomplish more together than we could ever do apart. Take the challenge; become an owner!

# NEW LIFE MARCH 3

SIGN UP ONLINE AT [LIVINGWATERFMC.ORG](http://LIVINGWATERFMC.ORG)  
OR PICK UP BAPTISM OR CHILD DEDICATION CARD AT INFO CENTER



# LIVING WATER



## GOING MULTI-SITE BY EMILY WESTPHAL

At Living Water our strength is not tied to any one program or idea, but God's Spirit alive in our people. What it all comes down to is each one of us being willing to listen and obey God's Word and direction from the Holy Spirit. Our greatest asset is combining our individual spirituality together in unity and creating an overall sense that we are the people of God carrying out His mission. We are real, relevant, and relentless in our pursuit of New Life for everyone. This is the commandment we have been given from Christ: to go and make disciples (Matthew 28:18-20).

We must strive to create opportunities for what God is doing at Living Water so this can be experienced at different locations. We must remove the barriers and instead of expecting people to come here, we want to do whatever it takes to get to them. This is the focus of Lead Pastor Mark Hirst and the body of believers here at Living Water: to multiply ourselves, our groups, and our church.

Multiplication means there is the potential for exponential growth at every level. It is bigger than just doing the usual church activities; rather, there is a purpose behind it. As we take the elements that are so vital to our walk with God and build those into others, we are essentially multiplying ourselves and fulfilling what Jesus asked us to do.

"There are always challenges," Hirst said. "It is far easier to be a Christian and just settle into comfort instead of discipling others. We are now at a point

where it is time to put what we have learned into action." The tentative target right now for a multi-site campus launch is September 2014. Living Water will maximize the use of the current facility, but as we reach our full potential with this building, we have to look for new ways to expand God's Kingdom.

A multi-site church is not a church plant. It is one church but in different locations. A church plant involves sending people out who are not attached to the same core leadership. With a multi-site, there will still be one pastoral staff and one core group of leaders that are connected to both places. The multi-site congregation usually starts out with a group of around 100-150 people with the goal of replicating what is happening already at the current campus. "The way we will measure success at a multi-site will be by the life changes taking place and the transformation happening in people's lives," Hirst said.

Right now, the location is still undecided. Aspects being taken into consideration include the population density, the core group of Living Water members who are already living there, where there is the greatest need, and most importantly, where God is calling us to go. The new campus could be housed in a rented or purchased facility. The multi-site campus will start with one service and then grow from there, similar to what happened at the inception of Living Water.

# MULTI-SITE

2014



The message at the multi-site will, most likely, be a combination of video driven messages (the message from Living Water's current campus) and live preaching (by a campus pastor). There will be live worship at both places. The different components of the service at the other campus are still very much in process and will all be determined not only by the Living Water staff, but also by input from the core group starting the campus.

One key element in starting a multi-site will be the campus pastor. Selecting the right person with the right gifts is critical. The multi-site must share Living Water's core values and work from the same message of grace and acceptance, but they

currently located in Dover, Millersburg, Canton, and Coshocton, is a strategic partner, and Living Water will continue to form partnerships with other churches as we develop our own multi-site model.

Financially speaking, time has been taken to calculate what the launch of our first multi-site campus will require. With funding needed for aspects like the salary of the campus pastor, technology, and ministry, "We are talking hundreds of thousands of dollars, not tens of thousands," Hirst said. "The goal will be for the campus to become fully self-supporting in the first 18 months of operation."

There will be challenges to face in every area. Open

**“Therefore go and make disciples of all nations, baptizing them in the name of the Father and of the Son and of the Holy Spirit,”**

will also have some freedom to “personalize” the campus as well. The campus pastor along with many other key volunteers will be developed over the next 18 months as God calls them into place.

“The majority of what will drive our decisions in the next 18 months will come from Living Water itself,” Hirst said. “We have been researching the process and are in communication with other local churches.” New Pointe Community Church, which is

communication with each other will be essential in order to succeed. Adjustments will be made and that can be difficult. Hirst commented, “Sometimes we don't realize how traditional we really are until we take an approach to something that is more cutting edge. This will definitely stretch us, but Living Water will not allow fear to keep us from sending people out in order to multiply what God is doing here.”

“This is where I believe the Lord is leading us. The potential to stop expanding the Kingdom of God is always there if we do not venture out from the peak we are sitting at right now, we would just coast downhill for years to come.”

From Living Water’s beginnings in a junior high band room, we have always been a church that has not been afraid to take risks. While we began as a body of believers centered around the Dalton and Kidron areas, the church has grown to include members from Ashland, Wooster, Canton, Orrville, Smithville, Tuslaw, and many other communities.

How we relate to people has changed with our growth but the nature, the core of that relationship, has been the same for the past 27 years and will continue. We started in 1986 with 12 people, and there has always been a desire for change. When God speaks it, we embrace it.

“The people at Living Water constantly surprise me and impress me with their generosity. Not just financially, but in their time and in their willingness to give of themselves. They are flexible and always excited when they are bringing Christ to others. They have such a desire to advance the Kingdom,” Hirst said. “We are trusting that the Lord will provide for us because He owns what is happening here, not us. Everything belongs to Him.”

So you may be asking yourself, what is my role in all of this right now?

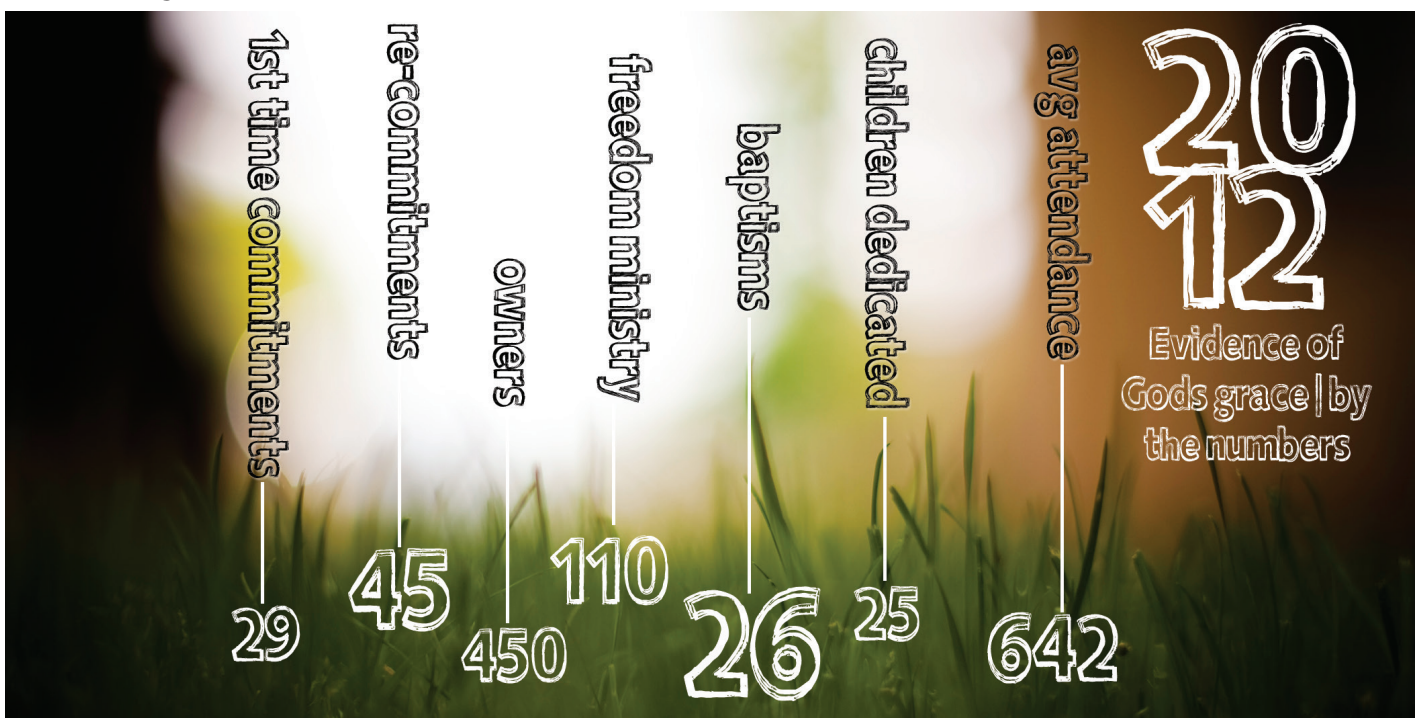
“We have always been a church that has not been afraid to **take risks.**”

Pray.  
Be inquisitive.  
Ask questions.

There are resources at the church and online for anyone who is in search of answers. You can also email any member of the staff with a question or concern.

“We all want to be a part of something that is pleasing to God and following through on what He wants, and we are going to be completely transparent about everything. We might answer your question with an, ‘I don’t know,’ but you can ask anything because all questions are welcome.” Hirst said. “People who are excited about having a multi-site should definitely let us know. I have already had people coming to me and telling me that they want to be a part of it.”

Through multi-site, Jesus is taking His command from 2,000 years ago and making it relevant for us today. God is definitely developing something new among us.



The first two numbers are only those we have prayed and talked with. This is just the beginning, we know there are a lot more!



Small groups provide the relationships and leadership necessary to provide care for most people at Living Water. However, sometimes there are areas in our life that are better addressed in a one-on-one environment. Living Water is

currently developing a mentoring program as an additional way of meeting people right where they are and helping them to take a next step. What is a mentor? The broad definition is this: an experienced person who goes out of his/her way to come alongside someone and encourage them. That need for encouragement can range anywhere from someone wanting to know how to better become a Christ-follower to someone going through difficult and heart-breaking experiences. Mentors encourage, listen, give guidance, and support. The focus is on restoration, rebuilding broken relationships, and helping individuals realize a deeper connection with God.

### **Who are the mentors:**

Mentors can literally be anyone who has a passion, an area of knowledge, or an admirable character trait or attitude. Your life experience and an understanding of God leading your life qualifies you to help others. New mentors will be equipped through an 8 week course to help prepare them for this ministry.

### **Who would participate in the program:**

We call those being mentored, "mentees." These are the people who are looking for help, guidance, and encouragement to work through personal hardships or to simply grow in their walk with Christ. Mentees may not necessarily be from LW. This is open to anyone.

- **Individual Mentoring:** Mentors facilitate individual growth by engaging participants in relationship-orientated activities designed for spiritual development, coaching, and healing. Some identified areas of impact include the following: discipleship, crisis management, and dealing with difficult relationships. The focus is on the whole person and will focus on spiritual, emotional, relational, and physical health.
- **Marriage Mentoring:** Mentors meet with married couples who are experiencing problems in their marriage. The goal is to restore and rebuild the marriage.
- **Financial Assistance/Mentoring:** We recognize the emergency and immediate financial needs that people have. Mentors will come alongside the individual or couple to coach, encourage, make suggestions, and support them through whatever struggle they are experiencing. Financial counseling will be based off of Dave Ramsey's Financial Peace University. Financial assistance may be considered as part of the overall plan.

### **How will mentoring work at Living Water:**

- Our first step will be to find people interested in mentoring and walk them through an 8 week training session to prepare for this ministry. We hope to offer our first training class in March 2013.
- A plan is being designed to match people (mentees) with specific needs to mentors that can relate to those needs.

We are already hearing from people within LW and in the community that would like to help. It is our hope that helping people take their next step with the assistance of a mentor will bring transformation to our church, local community, and beyond.

-Deb Himes, Director of Ministry Development



# FOOD CO OP

## Re-thinking how we serve

By Bekah Shipper

How do we truly impact and empower people? Can what we are doing in Care ministry hurt people?

Tim and Regina Miller have been concerned about this possibility. As the coordinators of the LW food pantry, the Millers have identified a fundamental problem with the way we approach Care ministry, and they intend to make it more effective.

In the past, the LW food pantry has looked like many other food pantries in the area. Once a month, families from Wayne County come to LW for a light supper, devotional and prayer time, and of course - groceries. While LW's current model is better than typical pantries, Regina has struggled with a growing sense that something was missing. She has been thinking we might be fostering dependency.

And then, the Millers were introduced to a new idea that changed everything: ministry done with good intentions can hurt people if it fosters attitudes of helplessness and dependence.

**There needs to be a paradigm shift in Care ministry. This is the signature of the church, and we need to do it better. Tim**

The Millers discovered that the current model, while created with good intentions, has the

potential to keep people in their impoverished situation. Their current goal is to incorporate a new model with the potential to move people out of – and beyond – their poverty.

**We always encourage our clients to reach beyond themselves. In moving to a new model, we will help people build community, take care of themselves, and each other.**  
**Regina**

In the new model, the food pantry will become a food co-op where there will be an application process that will include income guidelines and a co-op agreement.

Co-op members will take an active part in the decision-making process, giving input on everything from what food they would like to receive, to the types of speakers and educational classes they would like to have offered. Members will also work within the co-op unloading the food deliveries, packaging the food to be distributed, and using their own gifts and skills to care for each other.

**In the new model, we will be working with people, not for them. We will be fostering attitudes of independence, which will make**



**it easier to build more constructive relationships. R**

The inspiration behind revamping the current food pantry model goes beyond simply doing things better. It is also at the core of who Regina is. As Tim says, “it’s her heart; it’s what she was born to do.”

**God has given me a heart and compassion for the stranger. That is the force behind this. He wants to bring wholeness and health to them; He wants to bring Himself. R**

Ultimately, the new co-op model is about stewardship and empowerment. Ask the Millers what Biblical inspiration is behind the change, and they will share Matthew 25 with you, which refers to social ministry as a direct ministry to Christ, and an Old Testament model that probably goes unknown and unnoticed by most people.

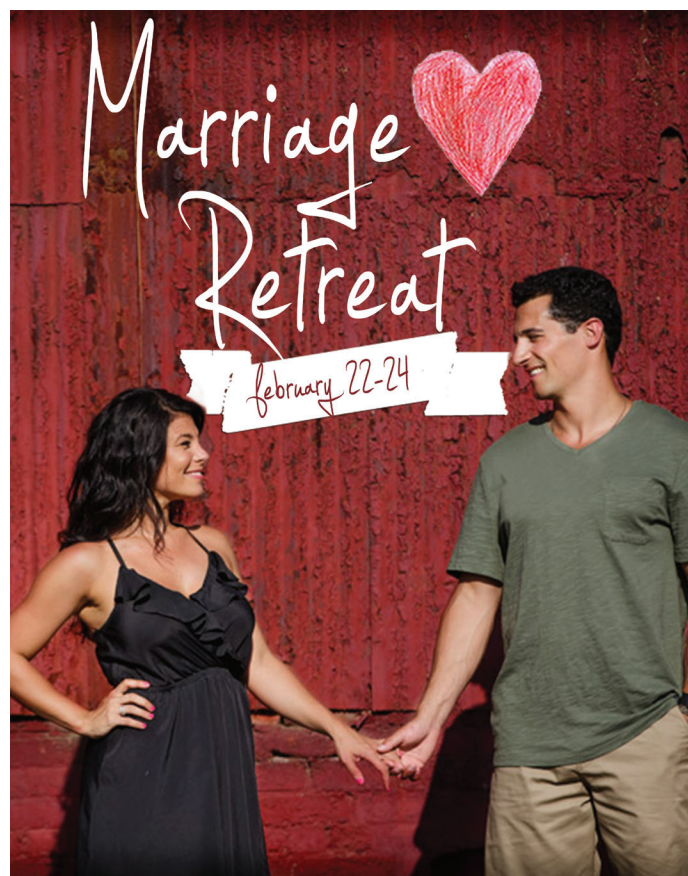
**In the Old Testament, the rich were to leave a portion of the harvest in their fields for the poor to come and glean. The food wasn’t simply handed out. It should be the same today. There is no way we can help people as well as they can help themselves. R**

In the new co-op model, the members will also incorporate the spiritual components that mirror God’s design. There are still a lot of unknowns, but the Miller’s goal is to help co-op members choose what they want to do. Parts of that process will be to help meet members’ spiritual needs while fostering health, wellness, and independence.

While many of the details of the new model are still being developed, the Millers are sure of one thing: the ministry has to start and end with compassion.

**People don’t care what you know, until they know you care. R**

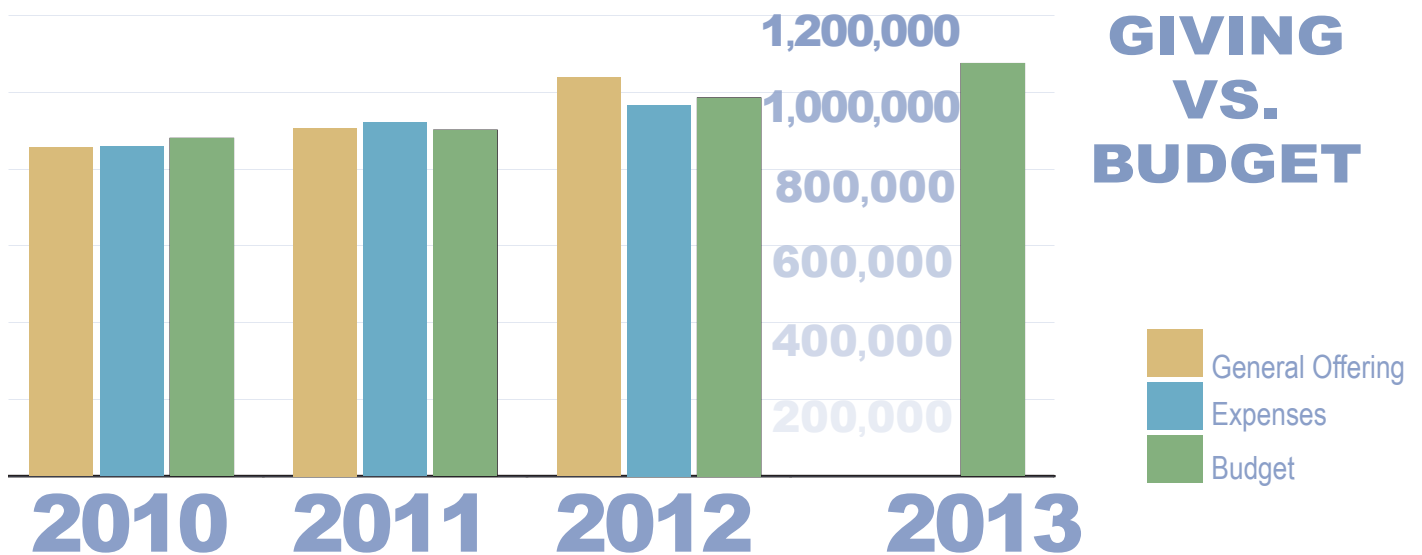
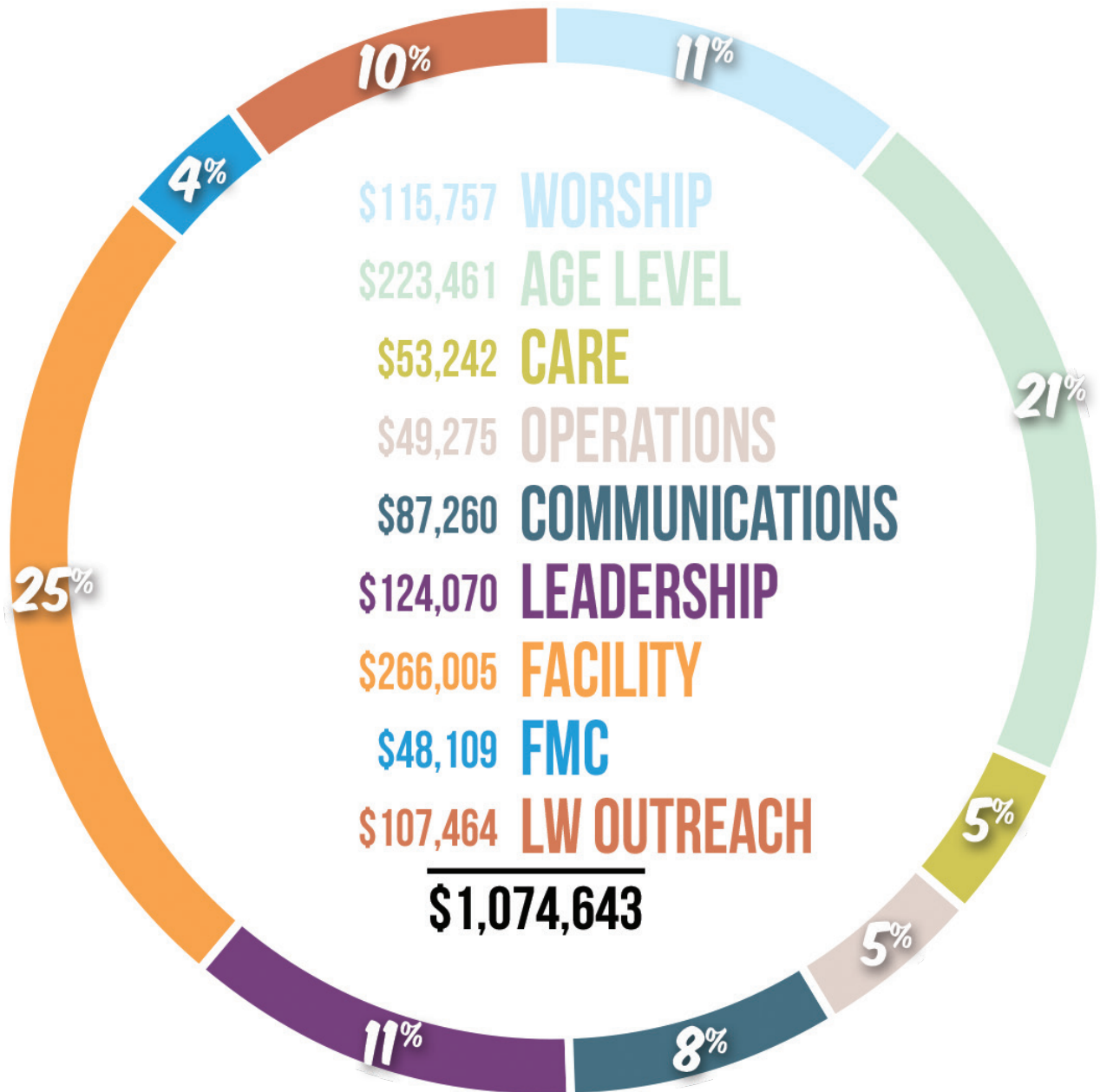
**UPCOMING EVENT**



For more info visit:  
[www.livingwaterfmc.org](http://www.livingwaterfmc.org)

# 2013 OVERVIEW

## TOTAL BUDGET ALLOCATION



# WORSHIP

We believe a critical component of our church is meeting together as a large group in worship. Each and every time we meet, we are thankful for the way God, through His Holy Spirit, moves in us as we extend to Him the praise and honor that He is due.

Sunday morning worship points us toward unity by allowing us to move together in a similar mindset as we live life fully engaged in God's purpose and plan.

## Details:

- Lead Pastor & Worship Leader
- Music and Sound Equipment
- Video and Communication Tools
- Creative Worship Services

“The teaching at LW is always about the application of scripture to my life today, in relationship to Jesus. The philosophical extrapolations and ramblings found in many churches are a waste of time if not dangerous.” - T. M.

“I come to LW because I see the Spirit dwelling in and resting on Pastor Mark by his testimony, I see Him move in Phil & the team through worship, and I see Him work through our generosity. I come because it's obvious; Jesus is here.” - A.S.

**WORSHIP:  
SPIRITUAL  
FORMATION**  
\$115,757



# AGE LEVEL

We believe becoming disciples of Christ requires that we have a group of people who know us, love us, and will challenge us. Each of our age level ministries center on moving people into small groups. This interaction and learning from each other takes the truth of Scripture and makes it relevant in our everyday lives. We need each other, and we desire to see everyone live life fully engaged.



## Details:

- Director of Adult Group Life
- Director of Student Ministry
- Director of Children's Ministry
- Administrative Assistants & Intern
- Leadership Development & Training
- Teaching Resources
- Age Level Group Events
- Communication and Promotion
- Creating Relevant Physical Environments

**AGE LEVEL:  
ADULT, STUDENT,  
& CHILDREN**  
\$223,461

"We started coming to LW because of the youth program. Now that we have kids, we have continued attending because of the strong kids program." - S.W.

"We love the children's program. I have three boys, and I love that my six year old has male teachers." - A.T.

"What keeps my family coming to LW each week is the people! We love that LW encourages people to be real." - A.K.

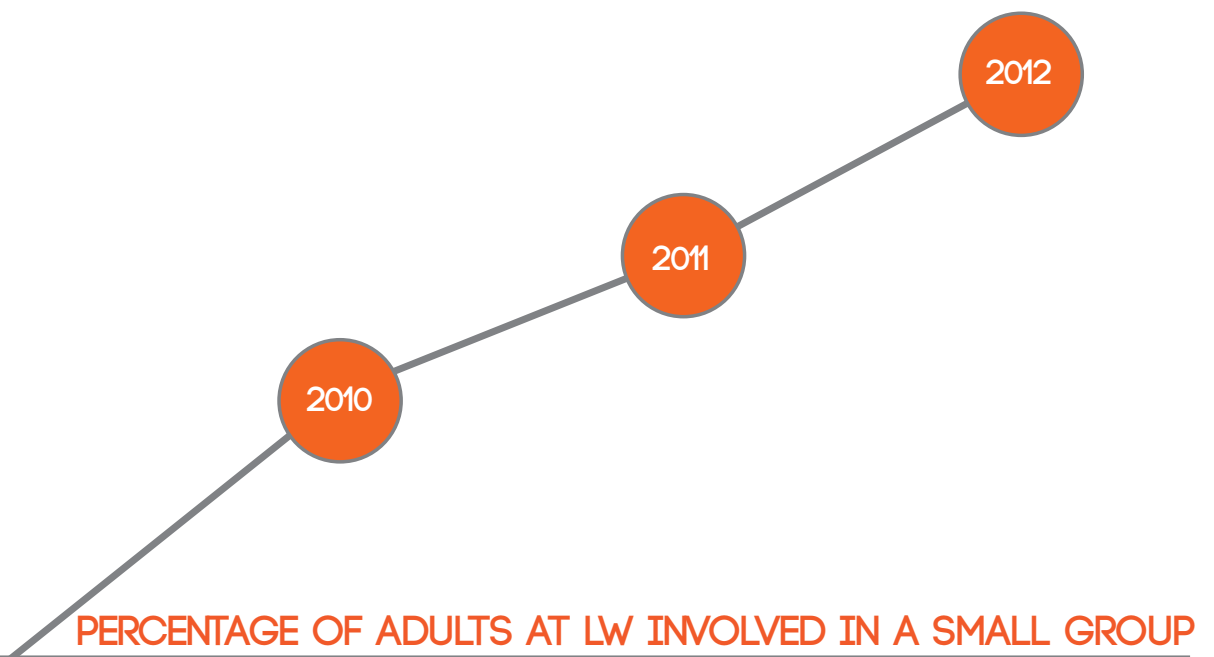
60%

55%

50%

45%

40%



PERCENTAGE OF ADULTS AT LW INVOLVED IN A SMALL GROUP

# small group multiplication

Small groups are more than a passing fad. Instead, they are a movement first created in Scripture and perfected by Jesus as He demonstrated the ultimate small group experience with His disciples. Their documented lives show us the joys, trials, sorrows, and ultimately the deeper purpose behind connection to one another. It is no wonder that during creation, the only thing that was, “not good” was man being alone. In our deepest beings, we are geared for relationship – deep, meaningful, and life-giving relationship with God and each other. Small groups are a pathway to these relationships, and they have proven to be an excellent way to connect people in many valuable ways. However, as with all things, there is always change and movement. This must also be a characteristic of small groups.

Jesus knew the value of change. He was constantly moving from one town to the next, and we rarely see Him operate the same way twice. Although His disciples are characterized as faithful followers, we see instances of doubt in the plans of Jesus. He shows us the ultimate leadership quality of leading people to a place they didn’t even know they wanted to go. It wasn’t easy for His disciples to catch on to this, but I’m sure you’ll agree that in the long run, Jesus knew what He was doing. This same dynamic of change must exist in every healthy small group as well. By multiplying your small group’s influence with others or making room for others to experience what you already have in a small group, you’re walking the same road Jesus did.

Typically, you hear the word multiplication associated with small groups. This is when an existing group changes by either adding people into the group or birthing two or more new small groups from the existing one. The concept is simple and Biblical – take the small group experience to others who currently don’t have it. While the process is simple, actually carrying it out can be a challenge. It requires self-sacrifice and an others first mindset. This year, I want to encourage you to have multiplication at the forefront of your small group. While the timing of adding new people or launching a new group will differ with each small group, the idea of multiplication must always be a part of the vision for each group at Living Water.

Imagine if the disciples kept to their inner circle and simply continued to meet together talking about the many wonders and miracles of Jesus among themselves. What would this world be like today if the disciples never influenced anyone else nor invited anyone into the amazing experience they were a part of? In the same way, what would happen if your small group never influenced anyone else? What if people missed out on being a part of a healthy small group because yours was too focused on staying the same rather than changing? These are tough questions to wrestle with, and I hope they drive both you and your small group to explore multiplication in 2013. Whether it is adding new people or launching brand new small groups, we must always make room for those who aren’t yet a part of a small group. It not only causes growth within us, but it also fulfills the innate need for connection in others. So who are you multiplying your influence with this year?

- Marc Harvey,  
Director of Adult Group Life



# CARE

Our Care ministry exists to serve the emotional, spiritual, and physical needs of those who are in urgent situations. We want to extend the compassion and care of Jesus Christ by preparing people for success in marriage, mentoring people going through the hardships of life, and caring for spiritual and physical needs during time of illness and death.

## Details:

- Pastor of Care
- Counseling/Mentoring
- Marriage Preparation & Weddings
- Food Pantry/Food Co-op
- Funeral Arrangements & Meals
- Hospital/Visitation
- Car Care

CARE:  
COMPASSION &  
CARE FOR OTHERS

\$53,242

“I love the people at LW. Their passion & compassion as well as their love for each other inside the church and for the community we serve is incredible.”

- J.M.

“The welcoming people who remember you is huge!”

- J.B.





## OPERATIONS

Being a church, the very body of Christ, necessitates developing an organizational structure.

Operations puts the infrastructure, tools, and resources in place for both volunteers and Living Water Staff to carry out their unique calling in advancing the Kingdom.

### Details:

- Director of Operations
- Information Technology
- Finance Assistant
- CPA Service Charges

## OPERATIONS: FINANCE & TECH

\$49,275



“The smiles of the staff and church family are infectious. We love to see and be part of that body of family friendliness.” - P.E.

“LW has given me spiritual encouragement and guidance over the past 27 years. First encouragement to listen for God’s voice and direction, then encouragement while pushing out of my comfort zone to reach out to the world at large with the love of God.” - K.K.



/LIVINGWATERFMC



## COMMUNICATIONS

We are committed to communicating to LW & the community in real and relevant ways. Everything created and implemented is done with a strategic plan of communication in mind. This includes the design and production of quality publications. It also includes discovery and use of innovative tools. Communications also includes connection to those who visit LW for the very first time.

COMMUNICATIONS:  
CONNECTION & PROMO

\$87,260

### Details:

- Communications Coordinator
- Website, Bulletin, Promos, etc.
- Office Supplies
- Guest Relations



“My joy comes from greeting people and conversation with new faces as well as those who have been at LW for years.”

- E. H.

“We appreciate the challenge of living the church outside the walls by reaching out to the community and many parts of the word. We also enjoy the Connection Pointe on Sunday mornings.”

- M.K.

# LEADERSHIP

Every move of God is originated by His Spirit among the people who will choose to follow Him fully and lead others. Leadership is critical to the future of the church and the growth of the Kingdom. We need to not only select quality leaders for our Staff and Leadership Team, but also put systems and environments in place where all people can develop their leadership potential. As the church grows, we must share the vision for where God is leading us and develop the people, ministries, and structures that will allow it to happen.

**LEADERSHIP:  
DEVELOPMENT & VISION**

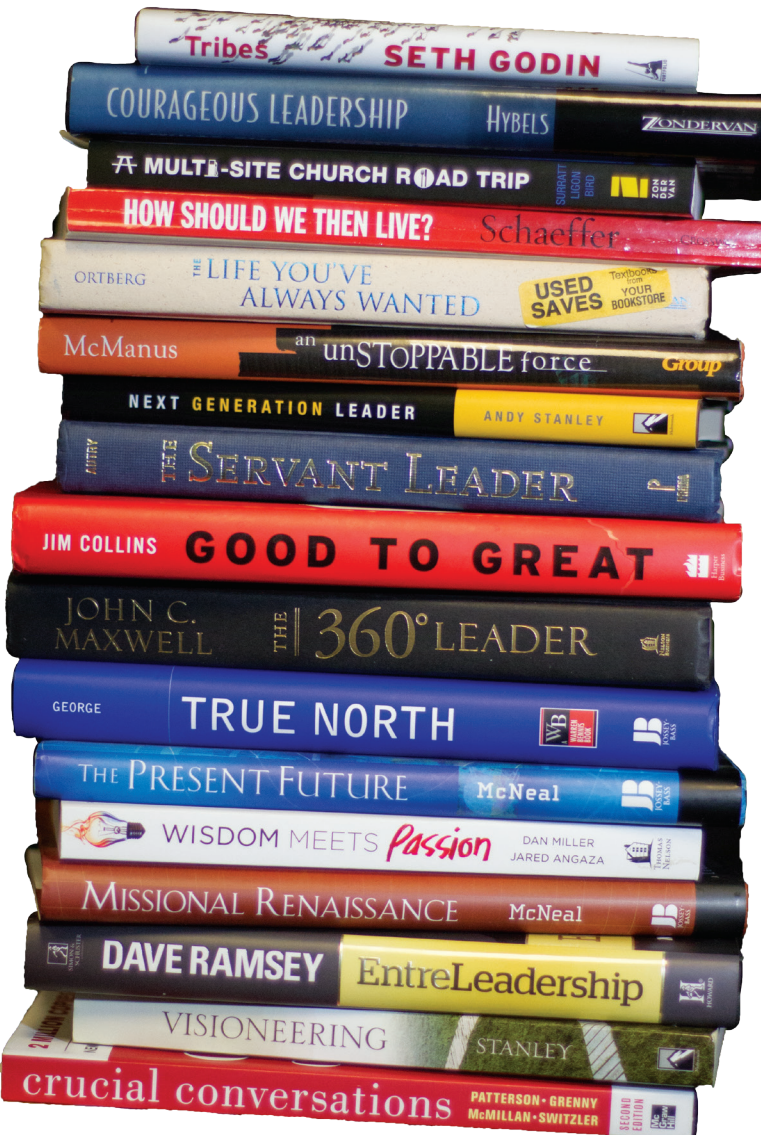
**\$124,070**

## Details:

- Lead Pastor
- Director of Ministry Development
- LW Leadership Summits
- Leadership development books, materials, and training

“What draws me to LW each week is the New Life! People willing to be transformed, the willingness to confess and change, and the spiritual humility among the leadership and staff.” - A.W.

“Pastor Mark has a passion to win the lost for Christ and that puts a longing for souls in my heart too. I can then see people’s hearts more clearly, as God sees them from His heart.” - M.H.



# FACILITY

We are grateful for the facility that God has given us. It serves as an environment to allow transformation to take place in our lives. Our facility plays a key role in connecting people and developing disciples of Jesus Christ who are willing to live for the connection of others.

**FACILITY:  
MAINTAINING &  
IMPROVING**  
\$266,005

## Details:

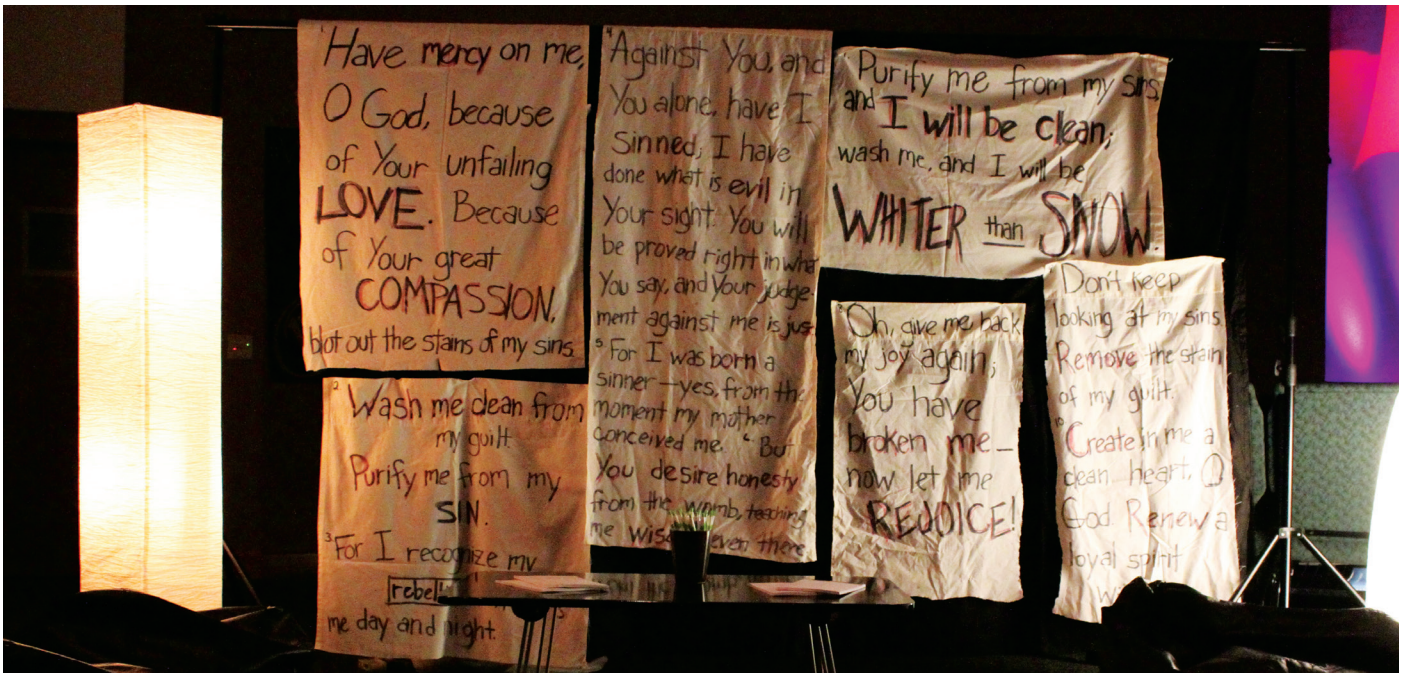
- Facility Coordinator & Assistant
- Mortgage, Utilities, & Insurance
- Maintenance & Cleaning
- Capital Improvements



“I just love the decor.”  
- D.H.

“I come to LW because I feel like I’ve found a second home. I am accepted, encouraged, and challenged to be who God has made me to be. I am transformed by Truth that transcends time and culture and speaks to me right where I’m at in my language. LW is striving to honor God by being the church Christ dreamed of when He conquered death. I am honored to be a part of that movement.”

- J.G.



## FMC

We are part of a larger group of believers from which we draw our values, find accountability, and are inspired by challenge. The money we pay provides for conference leadership and overall structure for our denomination. We are grateful for the freedom that the FMC gives us to live out our calling.

### Details:

- Support for the Ohio Conference and Denominational Leadership

If you would like to find out more about FMC, please visit: [www.fmcusa.org](http://www.fmcusa.org)



**DENOMINATION:  
THE FREE METHODIST  
CHURCH**

**\$48,109**

## A word from “Super Mike”

*And there before me was the glory of the God of Israel, as in the vision I had seen in the plain. Ezekiel 8:4*

The vision of a church can be defined as the picture of the future that creates excitement in the present. So many churches are struggling to survive in our culture. Often, people look first for more funds, discovering spiritual gifts, or building better facilities. Actually, the factor that is lacking is vision.

Living Water, you have always been fueled by your God-given vision. Seek it; hold on to it; follow it!

- Mike McFarren,  
Ohio Conference Superintendent

“I am drawn to LW because we have a global vision and mission - attacking both the local and international levels.”

- W.M.

“Many things draw us to LW, but one is the outreach focus.”

- J.M.

“LW has changed my life by reaching out to me and showing love like Jesus. The way we influence each other individually for Christ gets passed on again and again.”

- E.W.



## LW OUTREACH

Your giving is changing lives both locally and globally. 10% of everything given to LW goes toward our world through outreach. Through your regular giving, you are able to join others in making a bigger impact than you could on your own.

### Details:

#### International Partners

Asia Church Planting: Khoa & Tam Dinh  
Go Forth Ministries  
Hearts of Hope for Honduras  
The Seed Company (Bible Translation)  
Various Other Missions

#### National Partners

After the Storm (Disaster Relief)  
Transport for Christ  
AXIS & YWAM

#### Local Partners

Community Organizations  
Community Needs

**LW OUTREACH:  
INTERNATIONAL,  
NATIONAL, &  
LOCAL PARTNERS**

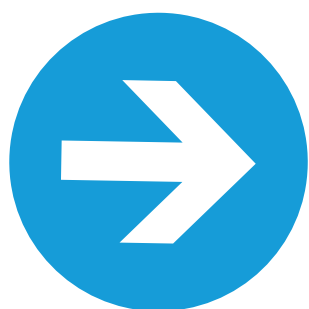
**\$107,464**

# DEBT ELIMINATION

In November 2009, Living Water embarked upon a building expansion and renovation project by adding the Connection Pointe and renovating the adult classroom, office, student ministry, and kitchen area. We financed this project with a loan of \$1,275,000.00 at 6.7% interest for 20 years from the Free Methodist Foundation. This new loan included \$590,000 of debt still owed from the 2003 building expansion (lobby, new worship center, and children's ministry area). In November 2011, LW had an amazing opportunity to refinance the loan with the Free Methodist Foundation of Ohio. The original loan was with the national foundation of the Free Methodist church, but the refinanced loan moved the liability to the Ohio Conference of the denomination.

The amount refinanced was \$1,140,599.25 at 5.0% interest for 15 years. This resulted in an immediate interest savings of nearly \$560,000! Even if you're not a math wizard or financial guru, saving \$560,000 is something to celebrate! But, the good news doesn't stop there. LW has always strived to pay off the loan as quickly as possible. Approximately 50 households participate in "Debt Elimination" through regular giving. This is an amount given above and beyond a regular tithe that goes directly onto the principle of the loan.

Based on our current repayment schedule, which includes money given to Debt Elimination, we are scheduled to pay off our loan in its entirety in about 8 years. The interest savings through your participation in Debt Elimination is calculated at nearly \$210,000. This means we have taken a 20 year loan and reduced it to only having 8 years left, which will save \$770,000 in total interest! Thank you LW for joining in the effort to eliminate debt. If you want to join in the movement to become debt free, you can simply mark any giving envelope with an amount for "Debt Elimination," or you can give online. We are very thankful for the work God has already done to help us reduce our debt, and we look forward with anticipation for what He will continue to do as we move forward in faith.



CHECK OUT LIVING WATER'S BLOG AT:  
[THELWBLOG.ORG](http://THELWBLOG.ORG)



**We are real people, living relevant lives,**





**relentlessly pursuing New Life.**





# CONNECTION POINTE



**315**  
POUNDS  
OF  
COFFEE  
BREWED

The Connection Pointe exists to be a place where people can establish new friendships and further the existing ones. Ultimately, a church is simply made up of a network of relationships to Christ, and we want to do everything we can to further that development.



**15,000**  
COFFEE  
CUPS  
USED  
IN 2012

The CP works because of your donations. Once we cover expenses with donations, we give additional proceeds to community projects.

So, go ahead...donate big!  
It will go to a great cause.

## From the Finance Office:

I would like to thank all of you who have been leading with generosity. Your faithful support of Living Water through both tithes and extravagant giving allows the continual building of God's Kingdom in the way He directs us. As you see in this magazine, 2012 has been a remarkable year of God's provision. Again, thank you for your obedience in giving to His work.

I believe it is important for you to know the Leadership Team and Staff of Living Water are incredibly diligent about how money is spent that is entrusted to our care. Money is spent in a purposeful, thought out, and scrutinized fashion. Our process for paying expenses is extremely thorough with appropriate checks and balances. Additionally, Living Water participates in financial consultations with Himes, Slater, and Hershberger LLC to assist in accurate reporting and bookkeeping. This firm also administers the Living Water payroll and any related audits.

You may not be aware that Living Water tithes from all money given through the general offering to LW Outreach. Therefore, each year, ten percent comes "off the top" to go towards local, state, national, and international causes. We have a separate, designated account for money given directly to LW Outreach. This means that through your general offerings and direct giving, more than ten percent of Living Water's revenue goes to the greater community. This is just one way we are living out our core value of impacting our neighborhood and world.

We are seeing a rise in the number of people who are choosing to give their offerings online. Our online giving system is very safe and secure, and it allows us to process offerings in a streamlined fashion. In addition to being safe, it is very convenient. You can either give one-time donations or setup reoccurring donations at your choosing. Thank you to everyone who currently gives online, and I want to encourage more of you to consider doing this as well. You can find more information by viewing the "Give" section of the Living Water website ([www.livingwaterfmc.org](http://www.livingwaterfmc.org)).

I have the great privilege of working alongside our Finance Assistant, Robin McFarren. She is no stranger to Living Water and brings to this position the expertise that comes from working in public school finance for 27 years. Robin and I work diligently to ensure the best financial practices are followed with the utmost integrity. As always, we are available to answer any questions. It is our desire to present timely and accurate reporting in all areas. We are honored with the opportunity to play a part in the stewardship of God's resources for the building of His Kingdom.



In Christ,  
Marc Harvey  
Director of Operations

*(Marc has served as the Director of Operations since 2010 and brings experience from the world of personal finance. Currently, he is a graduate student at Malone University majoring in Business Administration.)*

## Financial FAQs

### Who approves the annual budget at LW?

Each ministry department develops an annual budget, which is combined into a comprehensive budget based on each calendar year. In accordance with government regulation, under the IRS section 501(c)3, the board of directors of the non-profit corporation (Living Water) make the final decision on the annual budget. The board of directors is referred to as the "Leadership Team."

### Who approves all major purchases?

All purchases not accounted for in a ministry related budget are approved by the Leadership Team. The Leadership Team also approves all

budgeted and non-budgeted capital expenditures. The department leaders for each ministry approve all other purchasing within their department in accordance with the approved budget. A comprehensive overview of expenditures is reviewed on a monthly basis by the Leadership Team.

### Who serves on the Leadership Team?

The 2013 Leadership Team is comprised of Brad Steiner, Sue Hostetler, Jinny Gerber, Jeff Swartzentruber, Todd Brahler, Wendell Martin, Matt Near, Mark Hirst, and Marc Harvey. Mark Hirst serves as a liaison between the Staff and Leadership Team while Marc Harvey serves as a liaison between Finance and Human Resources to the Leadership Team.

# HAVE A STORY TO SHARE?

EMAIL US AT [INFO@LIVINGWATERFMC.ORG](mailto:INFO@LIVINGWATERFMC.ORG)



**LIVING WATER**  
REAL | RELEVANT | RELENTLESS

200 N KURZEN RD. DALTON, OH 44618 | 330.828.8356  
[WWW.LIVINGWATERFMC.ORG](http://WWW.LIVINGWATERFMC.ORG)